

## Chapter 6 Tries and Refutations

6.1 Tries have shared in the chess problem's progression from puzzle to art form. Originally they were simply plausible first moves which the solver might mistake for the key; as such they were particularly valued in block problems where mates were already set for all or most of Black's moves. Later they acquired an artistic interest of their own, whether because of common features attached to them or their refutations or because they introduced new lines of play. It came to be a requirement that a try should have only one refutation, i.e. there should be only one Black reply that defeats it.

6.2 This chapter is concerned with the power of the pieces in tries and refutations only. Records arising in try play, if they relate to the cumulative themes already shown in this part of the book, will be treated in the next chapter, along with records in set play. Strategic records, whether for tries and refutations or try play, belong to Part Two.

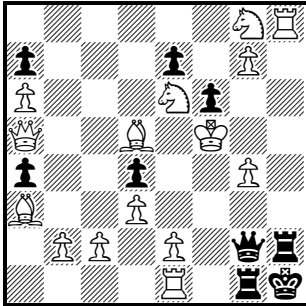
6.3 Ideally tries should be obvious enough to catch the solver's eye, but not too strong. A checking move or the capture of a Black piece other than a pawn, which might deceive a novice but which an experienced problemist would normally disregard as unlikely to be the key, is sometimes called a cook-try. Ideally also refutations should not be obvious, like a check or capture of the try-piece. But for record purposes such nuances are ignored, and all tries (however strong or obscure) are counted provided that they have different and unique refutations (however obvious). This, and the non-strategic nature of the tries, and the tendency for their cumulation to impoverish the actual play (to which sometimes, as in **261\***, the try piece makes no contribution), all combine to reduce the aesthetic, though not the task, interest of most of the problems in this chapter. To determine whether refutations are different, I apply the same criteria as are set out for White moves in 1.32.

### OVERALL RECORD

6.4 The record for the maximum number of tries with different refutations is 29 in **222**. A number of them are concurrent, but only the three checks might be called cook-tries. The actual play is dual-free.

222) C. J. Morse

*The Problemist*, 1988



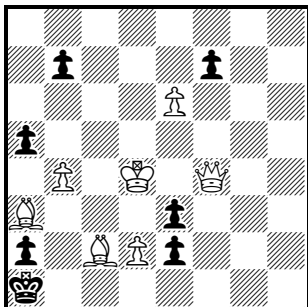
#2

- |            |                |             |            |
|------------|----------------|-------------|------------|
| 1.Rxh2+?   | 1...Kxh2!      | 1.Bd6?      | 1...Pxd6!  |
| 1.hR else? | 1...hRxR!      | 1.Qb4,      |            |
| 1.Pg5?     | 1...Pxc5!      | Qd2,Qc7?    | 1...Qxd5+! |
| 1.Sxf6?    | 1...Pxf6!      | 1.Qb5,      |            |
| 1.K any?   | 1...Pf5!       | Qc5,Qd8?    | 1...Rxe1!  |
| 1.Rxg1+?   | 1...Kxg1!      |             |            |
| 1.eR else? | 1...gRxR!      | 1.Sxe7      | block      |
| 1.Pe3?     | 1...Pxe3!      |             |            |
| 1.Sf4?     | 1...Pe6+!      | 1...Rxh8    | 2.Pxh8=Q   |
| 1.Bxg2+?   | 1...Kxg2!      | 1...hR else | 2.hRxR     |
| 1.dB else  |                | 1...Qxd5+   | 2.Qxd5     |
| NW-SE?     | 1...QxB!       | 1...Q else  | 2.BxQ      |
| 1.Pc4?     | 1...Pxc4 e.p.! | 1...Rxe1    | 2.Qxe1     |
| 1.Pb3?     | 1...Pxb3!      | 1...Rf1+    | 2.Rxf1     |
| 1.Bxe7?    | 1...Pa3!       |             |            |

*Tries by White Pieces*

6.5 **223** shows the theoretical maximum of 8 WK tries, all refuted by BP checks, plus five WQ tries. **224** shows the record of 16 WQ tries (plus two more with repeated refutations) with ingenious control of the defence Be5. **225** and **226** use similar tactics to achieve the theoretical maxima of 14 WR tries and 13 WB tries respectively. 8 WS tries are featured in **227**†, to which we shall return in 8.9, and doubled in **234**. However, a more commonly worked task is 7 WS tries with the eighth WS move the key. The amazing **228**\* shows this with only seven men: any move of the WS threatens 2.Qe4 (with Ke6 taken care of by 2.Re2), but seven out of the eight each commit a different error, and the sole blemish is that the key takes a flight. Another relatively common task is 4 WP tries (Albino), shown with superb artistry in **229**\*, to which also we shall return in 8.9. **230** shows 6 tries by a promoting WP, all refuted by a single BR, plus three by another WP, two of them refuted by the same BR, while **231** exploits the legitimacy of promotions to R and B on White's first move to match the 6 tries, and adds a seventh promotion for the key.

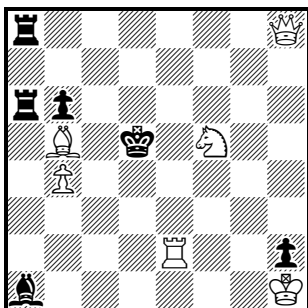
## 223) C. J. Morse

4th Comm., *The Problemist*, 2005

#2

- |                   |             |
|-------------------|-------------|
| 1.Kc5?            | 1...Pb6+!   |
| 1.Kd5, Qf6?       | 1...Pxe6(+) |
| 1.Ke5, Qe5?       | 1...Pf6(+)  |
| 1.Ke4?            | 1...Pf5+!   |
| 1.Kxe3?           | 1...Pe1=Q+! |
| 1.Kd3?            | 1...Pe1=S+! |
| 1.Kc3, Qc7, Qxe3? | 1...Pxb4(+) |
| 1.Kc4?            | 1...Pb5+!   |
| 1.Qh4?            | 1...Pxd2!   |
| 1.Qg3             | (2.Qe1)     |
| 1...Pxd2          | 2.Qc3       |

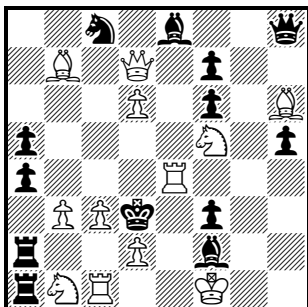
## 224) N. A. Macleod

*The Problemist*, 1989 (Version by E. Ferrón)

#2

- |                        |              |
|------------------------|--------------|
| 1.Q any on rank, Qxa1? | 1...RxQ!     |
| 1.Q else on diagonal   | 1...BxQ!     |
| 1.Qxh2?                | 1...Rh8!     |
| 1.Qh3?                 | 1...Ra3!     |
| 1.Qh5?                 | 1...Re8!     |
| 1.Qh6?                 | 1...Bf6!     |
| 1.Qh4                  | (2.Qc4, Qe4) |
| 1...Re8, Be5           | 2.Qc4        |
| 1...Rc8                | 2.Qe4        |

## 225) P. O'Shea (after N. A. Macleod)

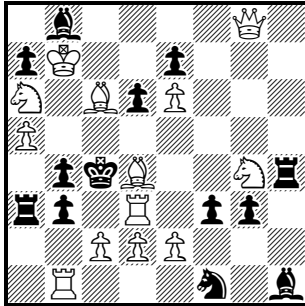
*The Problemist*, 1990

#2

- |            |                |
|------------|----------------|
| 1.Rc4?     | 1...Pxb3!      |
| 1.Rf4?     | 1...Rxb1!      |
| 1.eR else? | 1...Black x R! |
| 1.Be3      | (>2.Rd4)       |
| 1...Bxe3   | 2.Rxe3         |

226) P. O'Shea

*The Problemist*, 1996

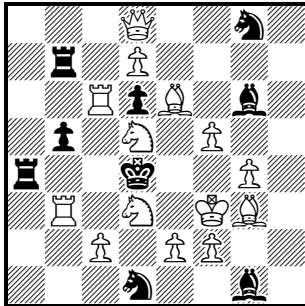


#2

- |            |                  |
|------------|------------------|
| 1.Ba1?     | 1...Pb2!         |
| 1.Bb2?     | 1...Pxc2!        |
| 1.Bg7?     | 1...Rxc4!        |
| 1.Be3?     | 1...Sxd2!        |
| 1.Bg1?     | 1...Pf2!         |
| 1.dB else? | 1...Black x B!   |
| 1.Qg5      | (>2.Bb5,Qb5,Qd5) |
| 1...Rh5    | 2.Bb5            |
| 1...fP any | 2.Qb5            |
| 1...Pd5    | 2.Qxd5           |
| 1...Rxa5   | 2.Pxb3           |

227+) V. Bartolović

*Sinfonie Scacchistiche*, 1988

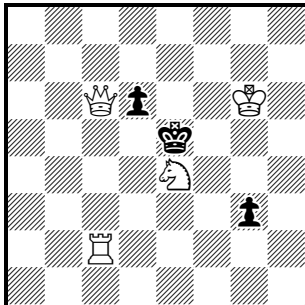


#2

- |             |           |             |          |
|-------------|-----------|-------------|----------|
| 1.5Sb4?     | 1...Ra6!  | 1.Qh4       | (>2.Pg5) |
| 1.Sc3?      | 1...Se3!  |             |          |
| 1.Se3?      | 1...Sc3!  | 1...Bxf5    | 2.Pxf5   |
| 1.5Sf4?     | 1...Pd5!  | 1...Bh5     | 2.Pxh5   |
| 1.Sf6?      | 1...Se7!  | 1...Sf6,Sh6 | 2.Q(x)f6 |
| 1.Se7?      | 1...Sf6!  | 1...Sc3     | 2.Pe3    |
| 1.Sc7?      | 1...Rb6!  | 1...Se3     | 2.Pc3    |
| 1.Sb6,Rxd6? | 1...Rxd7! |             |          |

228\*) G. P. Latzel

5th Hon. Ment., *Die Schwalbe*, 1956

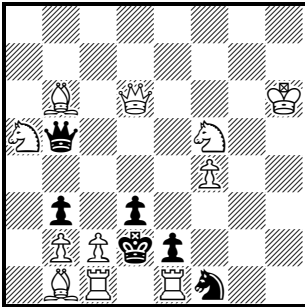


#2

- |         |           |
|---------|-----------|
| 1.Sxg3? | 1...Kf4!  |
| 1.Sf2?  | 1...Pxf2! |
| 1.Sd2?  | 1...Ke6!  |
| 1.Sc3?  | 1...Kd4!  |
| 1.Sc5?  | 1...Pxc5! |
| 1.Sxd6? | 1...Pg2!  |
| 1.Sf6?  | 1...Pd5!  |
| 1.Sg5   | (>2.Qe4)  |
| 1...Pd5 | 2.Qf6     |

229\*) Touw Hian Bwee

1st Prize, *Die Schwalbe*, 1977

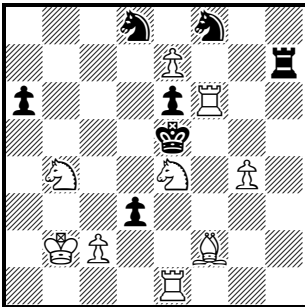


#2

- |              |           |
|--------------|-----------|
| 1.Pxb3?      | 1...Qc6!  |
| 1.Pc3?       | 1...Qd5!  |
| 1.Pc4?       | 1...Qxb6! |
| 1.Pxd3?      | 1...Qa4!  |
| 1.Bf2        | block     |
| 1...Qa6,Qc6  | 2.Sxb3    |
| 1...Qd5      | 2.Qb4     |
| 1...Qb6,Qc4  | 2.S(x)c4  |
| 1...Qa4,Qxa5 | 2.Qxd3    |
| 1...S any    | 2.B(x)e3  |
| 1...Pxc2     | 2.Rxc2    |

230) W. J. G. Mees

3rd Prize, *Schakend Nederland*, 1971

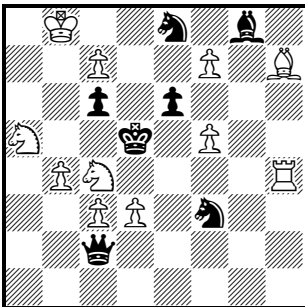


#2

- |           |          |             |              |
|-----------|----------|-------------|--------------|
| 1.Pxd8=Q? | 1...Rd7! | 1.Pc4?      | 1...Rh3!     |
| 1.Pxd8=S? | 1...Rc7! | 1.Pxd3?     | 1...Sc6!     |
| 1.Pe8=Q?  | 1...Rf7! |             |              |
| 1.Pe8=S?  | 1...Rh1! | 1.Kc3       | (>2.Bg3,Bd4) |
| 1.Pxf8=Q? | 1...Re7! |             |              |
| 1.Pxf8=S? | 1...Rg7! | 1...Sg6,Rh3 | 2.Bd4        |
| 1.Pc3?    | 1...Rh2! | 1...Sc6     | 2.Bg3        |

231) D. Stojnić

*The Problemist*, 2004



#2

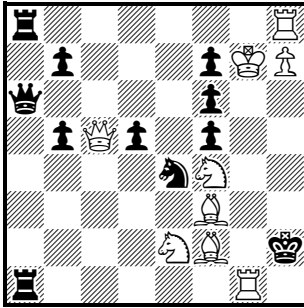
- |           |                   |
|-----------|-------------------|
| 1.Pxg8=S? | 1...Pxf5!         |
| 1.Pxg8=Q? | 1...Qe2!          |
| 1.Pf8=Q?  | 1...Qf2!          |
| 1.Pxe8=S? | 1...Qxc3!         |
| 1.Pxe8=B? | 1...Qa4!          |
| 1.Pxe8=R? | 1...Qh2!          |
| 1.Pxe8=Q  | (>2.Qxc6,Qd7,Qd8) |
| 1...Qh2   | 2.Qxc6            |
| 1...Se5   | 2.Rd4             |

6.6 As for the records for tries by more than one like piece, **232** shows 19 tries by two WRs, and **233** shows 17 tries by two WBs. A more striking achievement is **234**, which shows the

theoretical maximum of 16 tries by two WSs with two cleverly differentiated pairs of refutations after the WSs play to c6 and f3 and a witty WS promotion key. **235** shows 8 tries by as many WPS, all refuted by one BR; and this is exceeded by the remarkable **236** with 10 WP promotion tries, again with differentiated pairs of refutations after the promotions on b8 and h8, plus an 11th checking WP try.

232) P. O'Shea (after A. Dobrila)

*The Problemist*, 1997

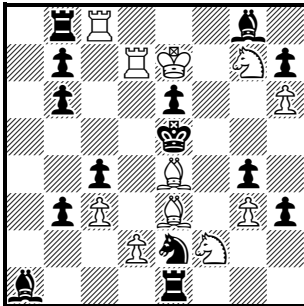


#2

- |                          |          |
|--------------------------|----------|
| 1.Rxa1, Rxa8?            | 1...QxR! |
| 1.either R else on rank? | 1...RxR! |
| 1.Rg2+?                  | 1...Kh1! |
| 1.Rg3?                   | 1...Sg5! |
| 1.gR else on file?       | 1...PxR! |
| 1.Bg3+                   |          |
| 1...Sxg3                 | 2.Qf2    |

233) P. O'Shea (after A. Dobrila)

*The Problemist*, 1996

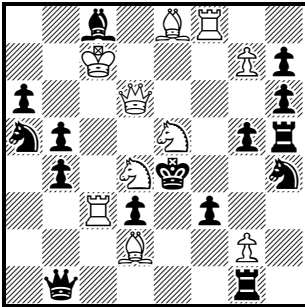


#2

- |                       |                |
|-----------------------|----------------|
| 1.4B any, Bd4+, Bf4+? | 1...Black x B! |
| 1.Bc5?                | 1...Bxc3!      |
| 1.Bxb6?               | 1...Rxc8!      |
| 1.Bg5?                | 1...Sxg3!      |
| 1.Rd4                 | (>2.Sxg4)      |

234) N. A. Macleod

*The Problemist*, 1990

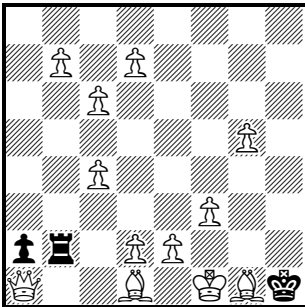


#2

- |          |            |          |           |
|----------|------------|----------|-----------|
| 1.Sxb5?  | 1...Pxb5!  | 1.Sd7?   | 1...Bxd7! |
| 1.dSc6?  | 1...Sb3!   | 1.Sf7?   | 1...Pg4!  |
| 1.Se6?   | 1...Bxe6!  | 1.Sg6?   | 1...Pxc6! |
| 1.Sf5?   | 1...Bxf5!  | 1.Sg4?   | 1...Bxc4! |
| 1.dSxf3? | 1...Sf5!   | 1.eSxf3? | 1...Sg6!  |
| 1.Se2?   | 1...fPxe2! | 1.Sxd3?  | 1...Qxd3! |
| 1.Sc2?   | 1...Qxc2!  | 1.Sc4?   | 1...Pxc4! |
| 1.Sb3?   | 1...Qxb3!  |          |           |
| 1.eSc6?  | 1...Sc4!   | 1.Pg8=S  | (>2.Sf6)  |

235) E. Battaglia

*The Problemist*, 1977 (V)

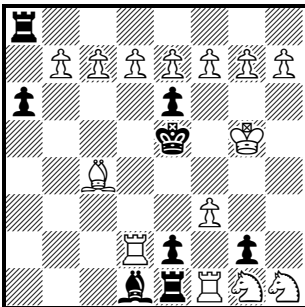


#2

- |            |           |            |           |
|------------|-----------|------------|-----------|
| 1.Pb8=any? | 1...Rxb8! | 1.Pd3?     | 1...Rxe2! |
| 1.Pd8=any? | 1...Rxb7! | 1.dB any?  | 1...Rb1+! |
| 1.Pc7?     | 1...Rb6!  | 1.gB ~ NW? | 1...Kh2!  |
| 1.Pg6?     | 1...Rb5!  |            |           |
| 1.Pc5?     | 1...Rb4!  | 1.Kf2      | block     |
| 1.Pf4?     | 1...Rb3!  |            |           |
| 1.eP any?  | 1...Rxd2! | 1...R any  | 2.Qh8     |

236) A. Dobrila

Comm., *The Problemist*, 1990



#2

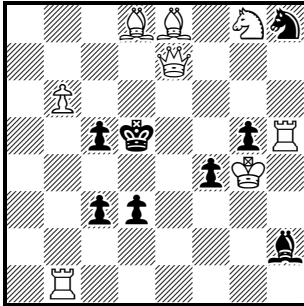
- |           |               |
|-----------|---------------|
| 1.Pxa8=Q? | 1...ePxf1=Q!  |
| 1.Pb8=Q?  | 1...Bb3!      |
| 1.Pb8=S?  | 1...Ba4!      |
| 1.Pc8=Q?  | 1...Rxc8!     |
| 1.Pd8=Q?  | 1...Rxd8!     |
| 1.Pe8=Q?  | 1...Rxe8!     |
| 1.Pf8=Q?  | 1...Rxf8!     |
| 1.Pg8=Q?  | 1...Rxc8+!    |
| 1.Ph8=Q?  | 1...Pxc1=Q!   |
| 1.Ph8=S?  | 1...Bc2!      |
| 1.Pf4+?   | 1...Ke4!      |
| 1.Sf2     | (>2.Pf4, Sg4) |

*Refutations by Black Pieces*

6.7 **237** shows the record of 8 BK refutations, 7 in response to checking tries by the WQ. **238** shows 11 BQ refutations, 10 of them in a duel with the WQ. **239** shows the theoretical maximum of 14 BR refutations, and **240** falls only one short with 12 BB refutations. **241\*** is a magical problem showing the full wheel of 8 BS refutations in a duel with the WQ. **242** shows with considerable economy the huge task of 4 refutations by each of 3 BPs, a triple Pickaninny, in response to tries by WK, WR and WS. Finally, **243** shows the theoretical maximum of 6 refutations by a promoting BP.

**237) P. O'Shea** (after M. Žigman)

*The Problemist*, 1996

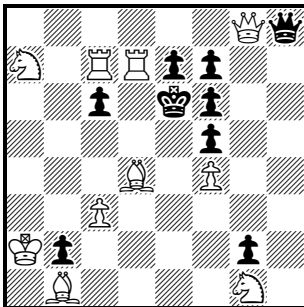


#2

- |                                  |           |
|----------------------------------|-----------|
| 1.Qxc5+, Qd6+, Qe6+, Qe5+, Qe4+? | 1...KxQ!  |
| 1.Qxg5+?                         | 1...Kd4!  |
| 1.Qd7+?                          | 1...Kc4!  |
| 1.Bc6+?                          | 1...Kxc6! |
| 1.Sf6+                           |           |
| 1...K any                        | 2.Qe4     |

**238) P. O'Shea** (after Z. Tomić)

*The Problemist*, 1996



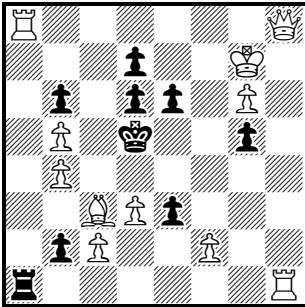
#2

- |  |           |
|--|-----------|
| 1.Qa8, Qb8, Qc8, Qd8, Qe8, Qf8, Qh7, Sxc6? | 1...QxQ!  |
| 1.Qg4?                                     | 1...Qh5!  |
| 1.Qg3?                                     | 1...Qh3!  |
| 1.Qxg2?                                    | 1...Qh1!  |
| 1.Rd8                                      | (>2.Rxc6) |



239) N. A. Macleod

*The Problemist*, 1989

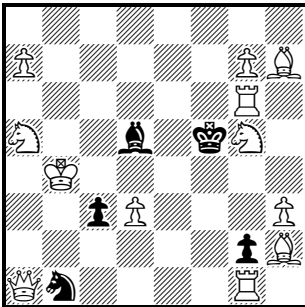


#2

- |                        |              |
|------------------------|--------------|
| 1.aRxa1?               | 1...Pxa1=Q!  |
| 1.aR else on file?     | 1...RxaR!    |
| 1.Rb1,Rd1,Re1,Rf1,Rg1? | 1...Rx1R!    |
| 1.Bxb2?                | 1...Rc1!     |
| 1.Kf8?                 | 1...Rxa8+!   |
| 1.Kh7,Kh6?             | 1...Rxb1+!   |
| 1.Qc8                  | (>2.Qb7,Qc4) |
| 1...Ra7                | 2.Qc4        |

240) P. O'Shea

*The Problemist*, 1989

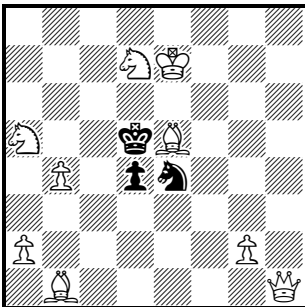


#2

- |                                    |           |
|------------------------------------|-----------|
| 1.Pa8=Q,Pg8=Q,Qa2?                 | 1...BxQ!  |
| 1.Rxg2?                            | 1...Bxg2! |
| 1.Sb7,Sc6,Sc4,Sb3,Sf3,Se4,Se6,Sf7? | 1...BxS!  |
| 1.Re1                              | (>2.Re5)  |
| 1...Be4                            | 2.Pxe4    |

241\*) J.-P. Boyer

2nd Prize, *Europe Échecs*, 1983

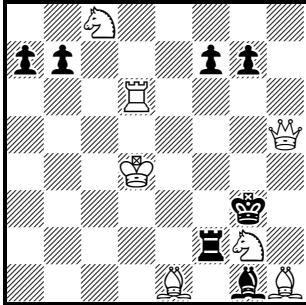


#2

- |              |                  |
|--------------|------------------|
| 1.Qg1?       | 1...Sf2!         |
| 1.Qf1?       | 1...Sd6!         |
| 1.Qd1?       | 1...Sd2!         |
| 1.Qc1?       | 1...Sc3!         |
| 1.Qh2?       | 1...Sg3!         |
| 1.Qh3?       | 1...Sc5!         |
| 1.Qh5?       | 1...Sg5!         |
| 1.Qh6?       | 1...Sf6!         |
| 1.Qh8        | (>2.Sb6,Qa8,Qg8) |
| 1...Sf6      | 2.Qa8            |
| 1...Sc5, Sd6 | 2.Sb6            |

242) A. Dobrila

Special. Ment., Cacciari Memorial Tourney, 1973/4

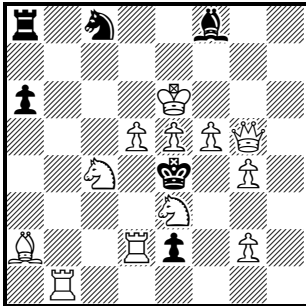


- |         |            |        |           |
|---------|------------|--------|-----------|
| 1.Ra6?  | 1...Pxa6!  | 1.Rf6? | 1...Pxf6! |
| 1.Kc5?  | 1...Pb6+!  | 1.Se7? | 1...Pg6!  |
| 1.Kc4?  | 1...Pb5+!  | 1.Ke3? | 1...Pg5!  |
| 1.Rc6?  | 1...Pxc6!  | 1.Rh6? | 1...Pxb6! |
| 1.Re6?  | 1...Pxe6!  | 1.Rb6? | 1...Pxb6! |
| 1.Ke5?  | 1...Pfg+!  |        |           |
| 1.Ke4?  | 1...Pfg5+! | 1.Kc3  | (>2.Rd3)  |
| 1.Rg6+? | 1...Pxc6!  |        |           |

#2

243) N. A. Macleod

Schweizerische Schachzeitung, 1986

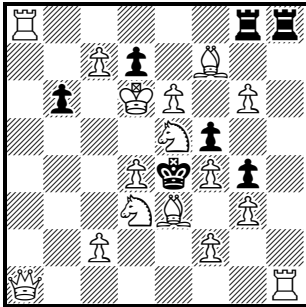


- |             |              |
|-------------|--------------|
| 1.bRd1?     | 1...Pxd1=Q!  |
| 1.Sd1?      | 1...Pxd1=S!  |
| 1.Qh4?      | 1...Pe1=Q!   |
| 1.Bb3?      | 1...Pe1=S!   |
| 1.Rf1?      | 1...Pxf1=Q!  |
| 1.Sf1?      | 1...Pxf1=S!  |
| 1.Sc2?      | 1...Bc5!     |
| 1.Rb4       | (>2.Sd6,Bb1) |
| 1...Bxb4    | 2.Bb1        |
| 1...Pe1=any | 2.Sd6        |

#2

6.8 As for refutations by more than one like piece, **244** shows 16 refutations by two BRs, 15 of them in a duel with the two WRs; **245** shows 14 refutations by two BBs; and **246** shows 11 refutations by two BSs. The ingenious **247** uses a complete bock to accumulate no fewer than 21 refutations by BPs, with the embellishment of an added mate after the key, while **248** shows 9 refutations by promoting BPs.

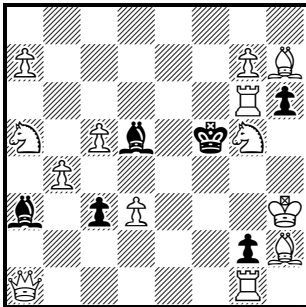
**244) P. O'Shea** (after A. Dobrila)  
*The Problemist*, 1996



#2

- |                    |                  |
|--------------------|------------------|
| 1.Rxg8?            | 1...Rxg8!        |
| 1.aR else on rank? | 1...gRxR!        |
| 1.Ra4?             | 1...Ra8!         |
| 1.Rxh8?            | 1...Rxh8!        |
| 1.hR else on file? | 1...hRxR!        |
| 1.Re1?             | 1...Rh1!         |
| 1.eP any?          | 1...Rxg6+!       |
| 1.Pd5              | (>2.Ra4,Qd4,Qa4) |
| 1...Rxa8           | 2.Qd4            |

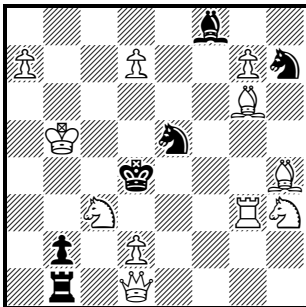
**245) P. O'Shea**  
*The Problemist*, 1996



#2

- |                     |                  |
|---------------------|------------------|
| 1.Pa8=Q,aS any,Qa2, |                  |
| Pg8=Q,gS any,Rxg2?  | 1...dB captures! |
| 1.Qc1?              | 1...Bxc1!        |
| 1.Qxc3?             | 1...Bb2!         |
| 1.Qe1               | (>2.Qe5)         |

**246) P. O'Shea**  
*The Problemist*, 1990

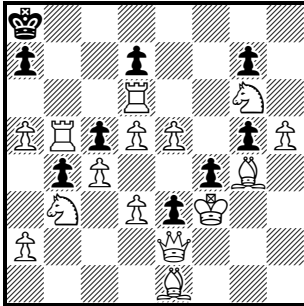


#2

- |           |           |           |           |
|-----------|-----------|-----------|-----------|
| 1.Qb3?    | 1...Sc4!  | 1.Pxf8=Q? | 1...Sxf8! |
| 1.Pa8=Q?  | 1...Sc6!  | 1.Bf6?    | 1...Sxf6! |
| 1.Pd8=Q+? | 1...Sd7!  | 1.Pd8=S?  | 1...Sg5!  |
| 1.Pg8=Q?  | 1...Sf7!  |           |           |
| 1.Sg1?    | 1...Sxg6! | 1.Rg5     | (>2.Bf2)  |
| 1.Rg4+?   | 1...Sxg4! |           |           |
| 1.Qf3?    | 1...Sxf3! | 1...Sxg6  | 2.Rd5     |
| 1.Rd3+?   | 1...Sxd3! |           |           |

247) J. Paavilainen

*Problemist Supplement*, 1999

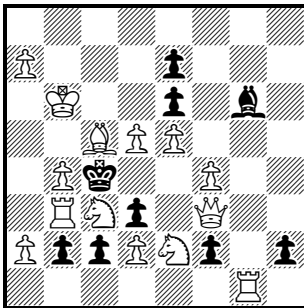


#2

- |         |           |          |           |
|---------|-----------|----------|-----------|
| 1.Rxd7? | 1...Pa6!  | 1.Qxe3?  | 1...Pxe3! |
| 1.dRb6? | 1...Pxb6! | 1.Ke4?   | 1...Pf3!  |
| 1.Pa3?  | 1...Pxa3! | 1.Bg3?   | 1...Pxc3! |
| 1.Sxc5? | 1...Pb3!  | 1.Bxd7?  | 1...Pg4+! |
| 1.Bc3?  | 1...Pxc3! | 1.Bh4?   | 1...Pxe4! |
| 1.Bxb4? | 1...Pxb4! | 1.Rf6?   | 1...Pxf6! |
| 1.Pd4?  | 1...Pxd4! | 1.Se7?   | 1...Pg6!  |
| 1.Rc6?  | 1...Pxc6! | 1.Ph6?   | 1...Pxe6! |
| 1.Ra6?  | 1...Pd6!  | 1.Pe6    | block     |
| 1.Re6?  | 1...Pxe6! | 1...Pa6  | 2.Rxa6    |
| 1.Bd2?  | 1...Pxd2! | 1...Pxe6 | 2.Rd8     |
| 1.Qc2?  | 1...Pc2!  |          |           |
| 1.Bf2?  | 1...Pxf2! |          |           |

248) D. Stojnic

*The Problemist*, 2004



#2

- |         |              |
|---------|--------------|
| 1.Pb5?  | 1...Pb1=Q!   |
| 1.Sb5?  | 1...Pb1=S!   |
| 1.Sb1?  | 1...Pxb1=S!  |
| 1.Sa4?  | 1...Pc1=Q!   |
| 1.Se4?  | 1...Pc1=S!   |
| 1.Sd1?  | 1...Pxd1=S!  |
| 1.Qe3?  | 1...fPxc1=Q! |
| 1.Qxf2? | 1...hPxc1=Q! |
| 1.Pxe6? | 1...Ph1=Q!   |
| 1.Pa8=Q | (>2.Qa6)     |
| 1...Be8 | 2.Qe4        |

*Duels*

6.9 It will already be evident that duels have been almost as much studied in tries and refutations as in actual play. In 1970 Hrvoje Bartolović ran a theme tourney in *Problem* with the aim of establishing records for the thirty-six duels on the pattern of Table IV, but a number of slots were left unfilled. In 2004 Dragan Stojnić returned to the task and in a remarkable burst of composition completed the tabulation, which was published in *The Problemist*. The outcome, with a few later improvements, is set out in Table V. The maxima for particular pieces can be seen, with the highest figure 10 appearing three times. A full wheel has been shown for the BS versus WQ and WB, but not for the WS. The full Albino-Pickaninny duel, a task pioneered in 1930 by Lev Loshinsky, is finely shown in **278\***: it can be matched with promoting pawns, as in **279. 230** has 6 tries by a promoting WP

refuted by a BR, while **257\*** shows 5 refutations by a promoting BP versus WQ.

6.10 These record duels inevitably contain repeated elements, including such weaknesses as capture refutations, checking and capture keys, and minimal actual play. At the same time there is much good construction and other points of interest. Commendable for their economy are **254**, **255** (a 10-fold duel), **256\*** (with thematic key and three actual mates), **261\*** (a gem of its kind), **262** and **268** (a maximum task). **264\*** won its prize for its elegant symmetry, while **266** is more fluid. The duel in **270** consists of 6 correction tries (see 8.13) by WS as part of a full wheel (1.Sg6? being the random try). **271\***, the best problem in the table, was found to have a dual refutation after 1.Sd5?, and this has been corrected in the version. Finally **275**, with its flurry of checks and double checks, follows **231** in its use of underpromotion tries, as do also **276** and **279**.

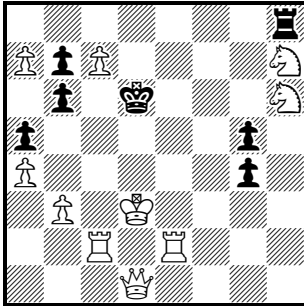
6.11 As to duels in tries and refutations by multiple pieces, we have already seen 8 tries by the WK refuted by multiple BPs in **223**, and a 15-fold duel between WRs and BRs in **244**. **280** has a similar 12-fold duel between pairs of Bs, while **281** has 7 promotion tries by WPs refuted by different BP promotions. We will return to duels in 13.15, where we deal with double duels.

**TABLE V DUELS IN TRIES AND REFUTATIONS**

	WK	WQ	WR	WB	WS	WP
<b>BK</b>	<b>249</b>	<b>237</b>	<b>258</b>	<b>264*</b>	<b>270</b>	<b>275</b>
	5	7	6	6	6	5
<b>BQ</b>	<b>250</b>	<b>238</b>	<b>259</b>	<b>265</b>	<b>271*</b>	<b>231</b>
	7	10	8	7	7	5
<b>BR</b>	<b>251</b>	<b>255</b>	<b>260</b>	<b>266</b>	<b>272</b>	<b>230</b>
	6	10	10	7	7	6
<b>BB</b>	<b>252</b>	<b>256*</b>	<b>261*</b>	<b>267</b>	<b>273</b>	<b>276</b>
	6	9	7	7	7	5
<b>BS</b>	<b>253</b>	<b>241*</b>	<b>262</b>	<b>268</b>	<b>274</b>	<b>277</b>
	5	8	6	8	7	5
<b>BP</b>	<b>254</b>	<b>257*</b>	<b>263</b>	<b>269</b>	<b>248</b>	<b>278*</b>
	4	5	4	4	4	4

249) M. Žigman

1st Hon. Ment., *Problem*, 1971

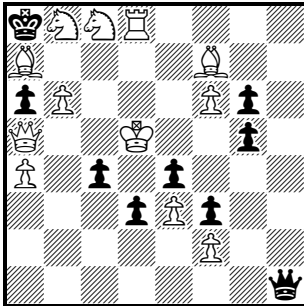


#2

- |          |              |
|----------|--------------|
| 1.Kc4+?  | 1...Kc6!     |
| 1.Kc3+?  | 1...Kc5!     |
| 1.Kd2?   | 1...Kd7!     |
| 1.Ke3+?  | 1...Ke5!     |
| 1.Ke4+?  | 1...Ke6!     |
| 1.Sf6    | (>2.Sf5,Sf7) |
| 1...Rf8  | 2.Sf5#       |
| 1...Rxb6 | 2.Pc8=S#     |

250) M. Klasinc

*Problem*, 1971

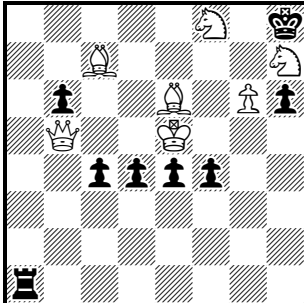


#2

- |         |           |
|---------|-----------|
| 1.Kxe4? | 1...Qh4+! |
| 1.Kd4?  | 1...Qa1+! |
| 1.Kxc4? | 1...Qc1+! |
| 1.Kc5?  | 1...Qh7!  |
| 1.Kc6?  | 1...Qb1!  |
| 1.Kd6?  | 1...Qh2+! |
| 1.Ke6?  | 1...Qh3+! |
| 1.Qc5   | (>2.Qc6)  |

251) L. Ugren

3rd Prize, *Problem TT*, 1971

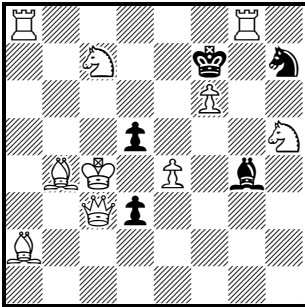


#2

- |         |              |
|---------|--------------|
| 1.Kf6?  | 1...Rg1!     |
| 1.Kd6?  | 1...Ra5!     |
| 1.Kd5?  | 1...Ra7!     |
| 1.Kxd4? | 1...Rd1+!    |
| 1.Kxe4? | 1...Re1+!    |
| 1.Kxf4? | 1...Rf1+!    |
| 1.Kf5   | (>2.Be5,Qe5) |
| 1...Ra7 | 2.Qe5        |
| 1...Ra5 | 2.Be5        |

252) D. Stojnić

*The Problemist*, 2004

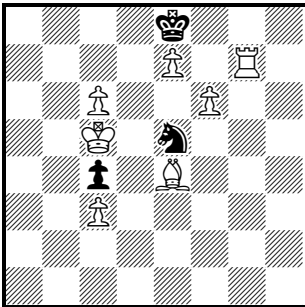


#2

- |         |           |
|---------|-----------|
| 1.Kxd5? | 1...Be6+! |
| 1.Kd4?  | 1...Bxh5! |
| 1.Kxd3? | 1...Be2+! |
| 1.Kb3?  | 1...Bd1+! |
| 1.Kb5?  | 1...Bd7+! |
| 1.Kc5?  | 1...Bc8!  |
| 1.Pxd5  | (>2.Rg7)  |

253) M. Štosić

*Selected Problems*, 1979

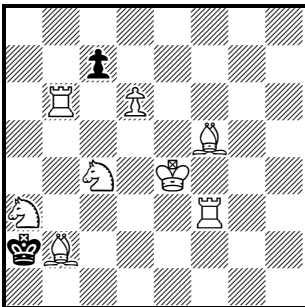


#2

- |          |           |
|----------|-----------|
| 1.Kb6?   | 1...Sd7+! |
| 1.Kd6?   | 1...Sf7+! |
| 1.Kd5?   | 1...Sxc6! |
| 1.Kd4?   | 1...Sf3+! |
| 1.Kb4?   | 1...Sd3+! |
| 1.Kb5    | block     |
| 1...S-   | 2.B(x)g6  |
| 1...Sf7  | 2.Rg8     |
| 1...Sxc6 | 2.Bxc6    |

254) V. Bartolović

*Problem*, 1970 (V)

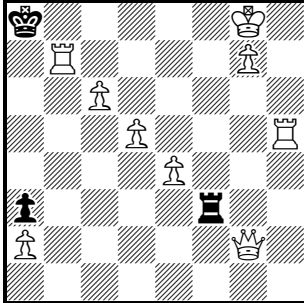


#2

- |        |            |
|--------|------------|
| 1.Ke5? | 1...Pxd6+! |
| 1.Kd5? | 1...Pc6+!  |
| 1.Kd4? | 1...Pc5+!  |
| 1.Ke3? | 1...Pxb6!  |
| 1.Kf4  | (>2.Bb1)   |

255) M. Žigman

4th Hon. Ment., *Problem TT*, 1971

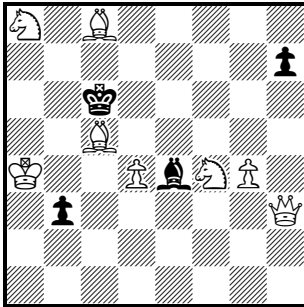


- |                        |            |
|------------------------|------------|
| 1. Qc2?                | 1...Rb3!   |
| 1. Qd2?                | 1...Rc3!   |
| 1. Qe2?                | 1...Rd3!   |
| 1. Qf2, Qf1, Qg3, Qh3? | 1...RxQ!   |
| 1. Qg4?                | 1...Rf5!   |
| 1. Qg5?                | 1...Rf6!   |
| 1. Qg6?                | 1...Rf7!   |
| 1. Re5                 | (>2. Re8)  |
| 1...Rf8+               | 2. Pxf8=Q# |

#2

256\*) D. Stojnić (Version by E. Ferrón)

*The Problemist*, 2004

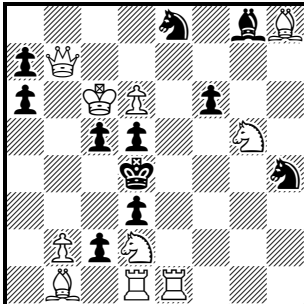


- |                         |             |
|-------------------------|-------------|
| 1. Qxb3?                | 1...Bc2!    |
| 1. Qc3?                 | 1...Bd5!    |
| 1. Qd3, Qf1?            | 1...B(x)d3! |
| 1. Qf3, Qg2, Qh1, Qxh7? | 1...BxQ!    |
| 1. Qh5, Pg5?            | 1...Bf5!    |
| 1. Qh6+?                | 1...Bg6!    |
| 1. Qe3                  | (>2. Qxe4)  |
| 1...Bd5                 | 2. Qe8      |
| 1...Bf5                 | 2. Pd5      |

#2

257\*) Y. Cheylan, D. Joffart & C. Wiedenhoff

*Europe Échecs*, 1982



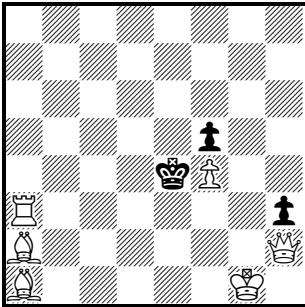
- |               |             |
|---------------|-------------|
| 1. Qb3?       | 1...Pxb1=S! |
| 1. Qxa7?      | 1...Pc1=Q!  |
| 1. Qxa6?      | 1...Pc1=S!  |
| 1. Qd7?       | 1...Pxd1=Q! |
| 1. Qe7?       | 1...Pxd1=S! |
| 1. Qh7        | (>2. Qxh4)  |
| 1...Pxd1=Q    | 2. Qxd3     |
| 1...Bxh7, Be6 | 2. S(x)e6   |
| 1...hS any    | 2. gSxf3    |
| 1...Sxd6      | 2. Bxf6#    |

#2



**258) M. Žigman**

*Problem, 1971 (V)*

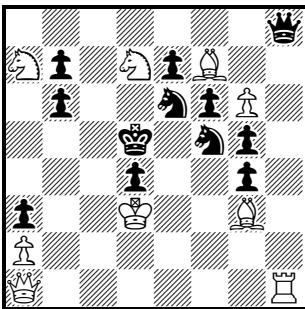


#2

- |                 |                  |
|-----------------|------------------|
| 1.Rb3?          | 1...Kd5!         |
| 1.Rc3?          | 1...Kd4!         |
| 1.Rd3,Re3+,Rf3? | 1...KxR!         |
| 1.Rg3?          | 1...Kxf4!        |
| 1.Qxh3          | (>2.Ra4,Qe3,Qf3) |
| 1...Kxf4        | 2.Qh4            |

**259) M. Žigman**

*Comm., Problem TT, 1971*

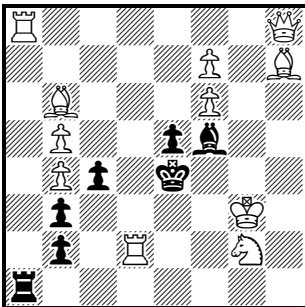


#2

- |                      |          |
|----------------------|----------|
| 1.Rb1?               | 1...Qc8! |
| 1.Rc1?               | 1...Qd8! |
| 1.Rf1?               | 1...Qb8! |
| 1.Rh3-7?             | 1...QxR! |
| 1.Rxh8               | (>2.Qh1) |
| 1...Sd6,Se3,Sxg3,Sh4 | 2.Qxd4   |

**260) V. Bartolović**

*Problem, 1971*

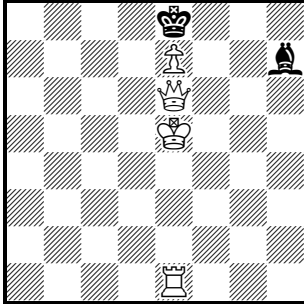


#2

- |                    |                             |
|--------------------|-----------------------------|
| 1.Rxa1?            | 1...Pxa1=Q!                 |
| 1.aR else on file? | 1...RxR!                    |
| 1.Rc8?             | 1...Rc1!                    |
| 1.aRd8?            | 1...Re1!                    |
| 1.Re8?             | 1...Rd1!                    |
| 1.Rg8?             | 1...Rf1!                    |
| 1.Qc8              | (>2.Bxf5,Qxf5,Qb7,Qxc4,Qc6) |
| 1...Bxh7           | 2.Qg4                       |

261\*) M. Lipton

*The Problemist*, 1992

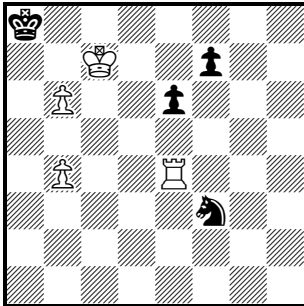


#2

- |        |           |
|--------|-----------|
| 1.Ra1? | 1...Be4!  |
| 1.Rb1? | 1...Bxb1! |
| 1.Rc1? | 1...Bc2!  |
| 1.Rd1? | 1...Bd3!  |
| 1.Rf1? | 1...Bf5!  |
| 1.Rg1? | 1...Bg6!  |
| 1.Rh1? | 1...Bg8!  |
| 1.Kf6? | 1...Bf5!  |
| 1.Kd6  | block     |
| 1...B~ | 2.Q(x)g8  |

262) V. Bartolović

*Problem*, 1971

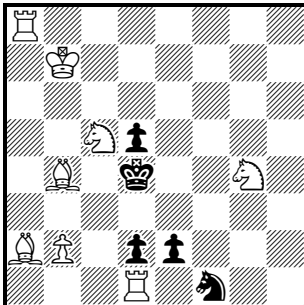


#2

- |                    |           |
|--------------------|-----------|
| 1.Re2?             | 1...Sd2!  |
| 1.Rg4?             | 1...Sg5!  |
| 1.Rd4,Re1,Re5,Rh4? | 1...SxR!  |
| 1.Rxe6?            | 1...Pxe6! |
| 1.Re3              | (>2.Ra3)  |

263) D. Stojnić

*The Problemist*, 2004

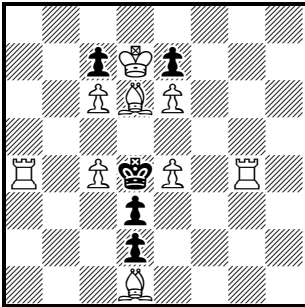


#2

- |            |             |
|------------|-------------|
| 1.Rf8?     | 1...Pe1=Q!  |
| 1.Ra3?     | 1...Pe1=S!  |
| 1.Ra4?     | 1...Pxd1=Q! |
| 1.Ra5,Rc8? | 1...Pxd1=S! |
| 1.Rd8      | (>2.Rxd5)   |
| 1...Se3    | 2.Rxd2      |

264\*) M. Štosić

1st Prize, *Problem TT*, 1971

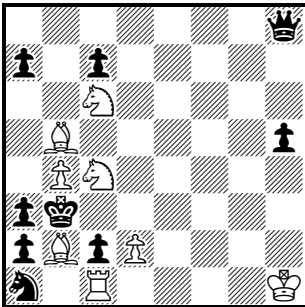


#2

- |            |           |
|------------|-----------|
| 1.Ba3?     | 1...Kc3!  |
| 1.Bb4?     | 1...Kxc4! |
| 1.Bxc7?    | 1...Kc5!  |
| 1.Bxe7?    | 1...Ke5!  |
| 1.Bf4?     | 1...Kxe4! |
| 1.Bg3?     | 1...Ke3!  |
| 1.Bh2      | block     |
| 1...Kc3    | 2.Be5     |
| 1...K else | 2.Bg1     |

265) D. Stojnić

*The Problemist*, 2004 (V)

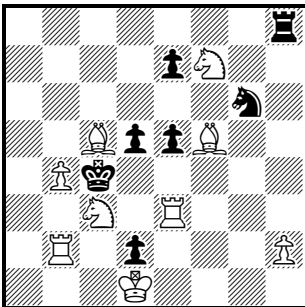


#2

- |                  |           |
|------------------|-----------|
| 1.Bxa3?          | 1...Qa8!  |
| 1.Bxa1, Bc3-Bg7? | 1...QxB!  |
| 1.Bxh8           | (>2.4Sa5) |

266) Z. Tomić

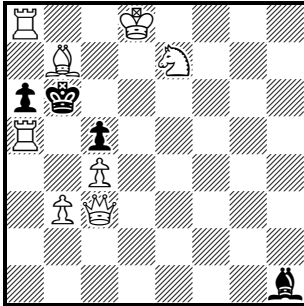
*Problem*, 1971



#2

- |         |           |
|---------|-----------|
| 1.Bc8?  | 1...Rxc8! |
| 1.Bd7?  | 1...Rb8!  |
| 1.Be6?  | 1...Rd8!  |
| 1.Bxg6? | 1...Rh5!  |
| 1.Bg4?  | 1...Rxb2! |
| 1.Bh3?  | 1...Rxb3! |
| 1.Bb1?  | 1...Ra8!  |
| 1.Bc2   | (>2.Bb3)  |

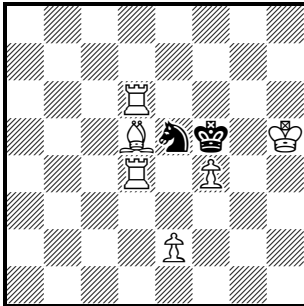
**267) D. Stojnić** (after P. Ivanić)  
*The Problemist*, 2004



#2

- |           |           |
|-----------|-----------|
| 1.Bxa6?   | 1...Bxa8! |
| 1.Bc8?    | 1...Bb7!  |
| 1.Bc6-g2? | 1...BxB!  |
| 1.Qe5     | (>2.Qc7)  |
| 1...Kxa5  | 2.Qxc5    |
| 1...Kxb7  | 2.Qb8     |

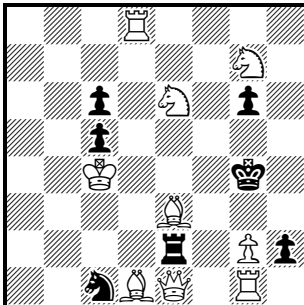
**268) M. Žigman**  
*Problem*, 1971



#2

- |            |           |
|------------|-----------|
| 1.Bc4?     | 1...Sxc4! |
| 1.Bb3,Ba2? | 1...Sd3!  |
| 1.Bc6?     | 1...Sxc6! |
| 1.Bb7?     | 1...Sd7!  |
| 1.Bf7?     | 1...Sxf7! |
| 1.Bg8?     | 1...Sg6!  |
| 1.Bf3?     | 1...Sxf3! |
| 1.Bg2?     | 1...Sg4!  |
| 1.Be6+?    | 1...Kf6!  |
| 1.Be4+?    | 1...Kxf4! |
| 1.Pe3      | (>2.Be4)  |

**269) D. Stojnić**  
*The Problemist*, 2004

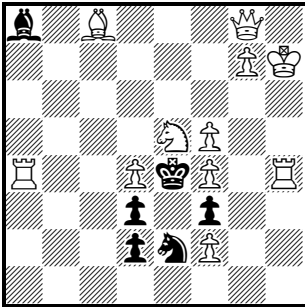


#2

- |             |             |
|-------------|-------------|
| 1.Bxc1?     | 1...Pxc1=S! |
| 1.Bxc5?     | 1...Pxc1=Q! |
| 1.Bf4?      | 1...Ph1=S!  |
| 1.Bg5?      | 1...Ph1=Q!  |
| 1.Sxc5      | (>2.Rd4)    |
| 1...Sb3,Sd3 | 2.Bxe2      |

270) M. Žigman

5th Prize *ex aequo*, Problem TT, 1971 (Version by E. Ferrón)

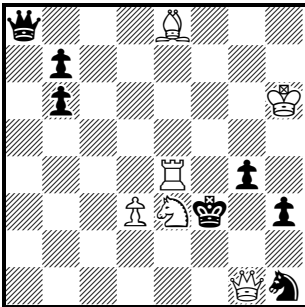


- |             |           |
|-------------|-----------|
| 1.Sf7?      | 1...Kd5!  |
| 1.Sd7?      | 1...Kxf5! |
| 1.Sc4?      | 1...Kxd4! |
| 1.Sxd3?     | 1...Kxd3! |
| 1.Sxf3?     | 1...Kxf3! |
| 1.Sg4?      | 1...Kxf4! |
| 1.Sg6, Qe6? | 1...Bd5!  |
| 1.Sc6       | (>2.Qe6)  |

#2

271\*) C. Mansfield

1st Prize, B.C.P.S. Ring Tourney, 1958 (Version by A. C. Reeves)

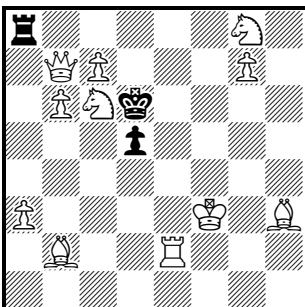


- |          |                    |
|----------|--------------------|
| 1.Sf1?   | 1...Qa2!           |
| 1.Sd1?   | 1...Qc8!           |
| 1.Sc2?   | 1...Qa1!           |
| 1.Sc4?   | 1...Qa5!           |
| 1.Sd5?   | 1...Qxe8!          |
| 1.Sf5?   | 1...Qd8!           |
| 1.Sxg4?  | 1...Qb8!           |
| 1.Sg2    | (>2.Se1, Sh4, Re3) |
| 1...Kg3  | 2.Re3#             |
| 1...Pxb2 | 2.Qe3#             |

#2

272) V. Bartolović

Problem, 1970 (V)

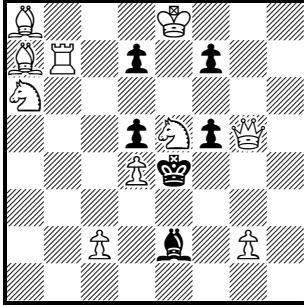


- |                       |            |
|-----------------------|------------|
| 1.Se5?                | 1...Rxc8!  |
| 1.cSe7?               | 1...Rf8+!  |
| 1.Sd8, Sb8, Sa7, Sa5? | 1...Rxc8!  |
| 1.Sb4?                | 1...Rxc3+! |
| 1.Sd4                 | (>2.Qc6)   |
| 1...Rxa3+             | 2.Bxa3     |
| 1...Rf8+              | 2.Pxf8=Q   |

#2

273) M. Žigman

Comm., *Problem TT*, 1971 (V)

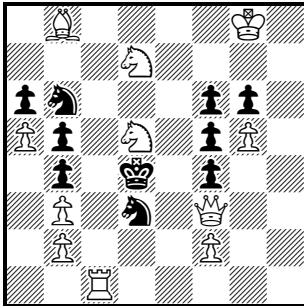


- |                    |           |
|--------------------|-----------|
| 1.Sxf7?            | 1...Bh5!  |
| 1.Sxd7?            | 1...Bb5!  |
| 1.Sc6?             | 1...Bxa6! |
| 1.Sc4,Sd3,Sf3,Sg4? | 1...BxS!  |
| 1.Sg6?             | 1...Pxc6! |
| 1.Pg3              | (>2.Qf4)  |

#2

274) V. Bartolović

*Problem*, 1970

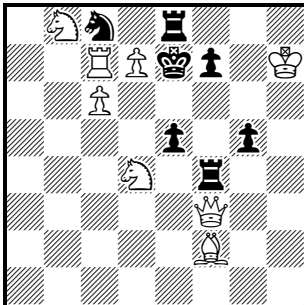


- |            |           |
|------------|-----------|
| 1.Sxf4?    | 1...Sxf4! |
| 1.Se3?     | 1...Se1!  |
| 1.Sc3?     | 1...Sxc1! |
| 1.Sxb4?    | 1...Sxb4! |
| 1.5Sxb6?   | 1...Sxf2! |
| 1.Sc7?     | 1...Sc5!  |
| 1.Se7?     | 1...Se5!  |
| 1.5Sxf6    | block     |
| 1...bS any | 2.Q(x)d5  |
| 1...dS any | 2.B(x)e5  |

#2

275) D. Stojnić

*The Problemist*, 2004

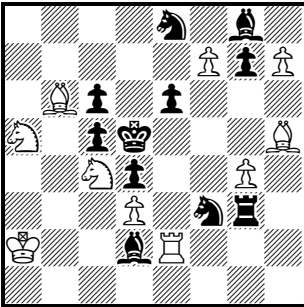


- |            |           |
|------------|-----------|
| 1.Pxc8=Q+? | 1...Kf6!  |
| 1.Pxc8=S+? | 1...Kd8!  |
| 1.Pxe8=Q+? | 1...Kxe8! |
| 1.Pd8=S+?  | 1...Kf8!  |
| 1.Pd8=B+?  | 1...Kd6!  |
| 1.Pd8=Q+   |           |
| 1...Kxd8   | 2.Rd7     |
| 1...Kf8    | 2.Sd7     |

#2

276) D. Stojnić

*The Problemist*, 2004

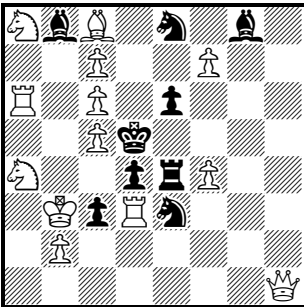


#2

- |            |                   |
|------------|-------------------|
| 1.fPxg8=S? | 1...Bg5!          |
| 1.fPxg8=Q? | 1...Be3!          |
| 1.Pf8=Q?   | 1...Bb4!          |
| 1.Pxe8=S?  | 1...Bf4!          |
| 1.Pxe8=B?  | 1...Bxa5!         |
| 1.Pxe8=Q   | (>2.Qxc6,Qd7,Qd8) |
| 1...Bf4    | 2.Qxc6            |
| 1...Se5    | 2.Rxe5            |

277) D. Stojnić

*The Problemist*, 2004

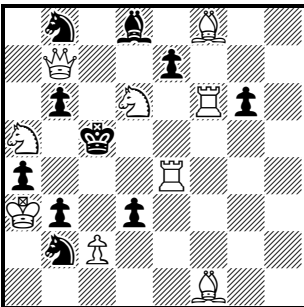


#2

- |                 |           |
|-----------------|-----------|
| 1.Pxg8=S?       | 1...Sf5!  |
| 1.Pxg8=Q?       | 1...Sg2!  |
| 1.Pf8=Q?        | 1...Sd1!  |
| 1.Pxe8=S?       | 1...Sg4!  |
| 1.Pxe8=Q?       | 1...Sc4!  |
| 1.Pxc3          | (>2.Rxd4) |
| 1...Pe5         | 2.Pxg8=Q  |
| 1...Sc2,Sf5,Sg2 | 2.Pc4     |

278\*) A. C. Reeves

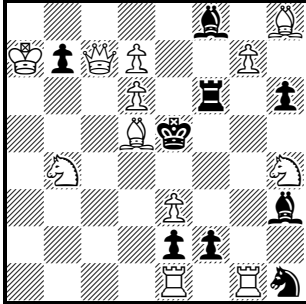
*Probleemblad*, 1965



#2

- |          |           |
|----------|-----------|
| 1.Pxb3?  | 1...Pxd6! |
| 1.Pc3?   | 1...Pxf6! |
| 1.Pc4?   | 1...Pe6!  |
| 1.Pxd3?  | 1...Pe5!  |
| 1.Rb4    | (>2.Se4)  |
| 1...Sc4+ | 2.Rxc4    |
| 1...Sc6  | 2.Qxc6    |
| 1...Pxd6 | 2.Bxd6    |

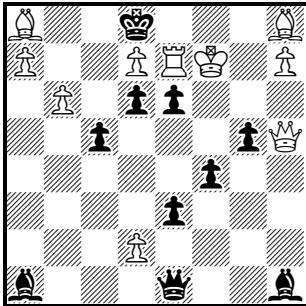
279) D. Stojnić  
*The Problemist*, 2004



#2

- |           |                    |
|-----------|--------------------|
| 1.Pg8=Q?  | 1...Pxe1=S!        |
| 1.Pxf8=S? | 1...Pxcg1=Q!       |
| 1.Pxf8=B? | 1...Pxe1=Q!        |
| 1.Pxf8=R? | 1...Pf1=Q!         |
| 1.Pxf8=Q  | (>2.Bxf6,Qc3,Qxf6) |
| 1...Pf1=Q | 2.Qc3              |

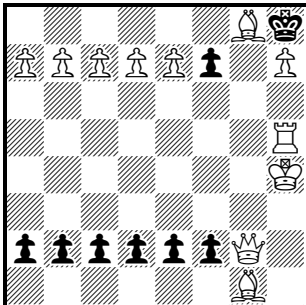
280) A. Dobrila  
*The Problemist*, 1989



#2

- |            |           |
|------------|-----------|
| 1.Bxa1?    | 1...Qxa1! |
| 1.hB else? | 1...aBxB! |
| 1.Bxh1?    | 1...Qxh1! |
| 1.aB else? | 1...hBxB! |
| 1.Kg8      | (>2.Qe8)  |

281) A. Dobrila  
*The Problemist*, 1992



#2

- |          |  |
|----------|--|
| 1.Pa8=Q? | 1...Pa1=Q!                             |
| 1.Pb8=Q? | 1...Pb1=Q!                             |
| 1.Pc8=Q? | 1...Pc1=Q!                             |
| 1.Pd8=Q? | 1...Pd1=Q!                             |
| 1.Pe8=Q? | 1...Pe1=Q!                             |
| 1.Pd8=S? | 1...Pf1=Q!                             |
| 1.Pe8=S? | 1...Pxcg1=Q!                           |
| 1.Bxf7   | (>2.Qg8,Pa8=Q,Pb8=Q,Pc8=Q,Pd8=Q,Pe8=Q) |

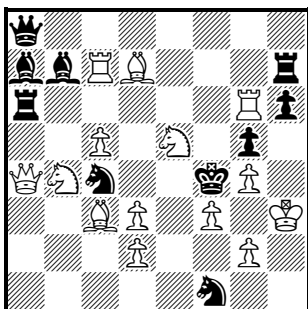


## OTHER RECORDS

6.12 A few of the ideas of 5.7-5.8 can be applied to tries and refutations. Thus **282\***, to which we shall return in 8.12, shows 6 tries and key by different White men moving to one square (c6), and **283\*** shows 5 different refutations on one square (d4). **284** shows the theoretical maximum of tries by all 16 White men, each with a different refutation. Its counterpart is the equally remarkable **285** with refutations by all 16 Black men defeating seventeen White tries.

**282\*) J. C. van Gool** (after D. Kutzborski)

*Journal de Genève*, 1978

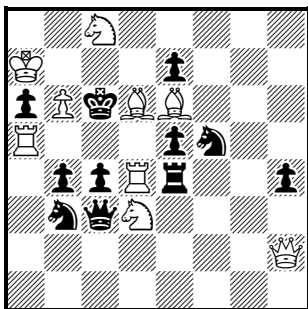


#2

- |                           |               |
|---------------------------|---------------|
| 1.Qc6?                    | 1...cSe3!     |
| 1.gRc6?                   | 1...Qg8!      |
| 1.Bc6?                    | 1...Qd8!      |
| 1.bSc6?                   | 1...Sg3!      |
| 1.eSc6?                   | 1...fSe3!     |
| 1.Pc6?                    | 1...Bd4!      |
| 1.cRc6                    | (>2.Sd5,gRf6) |
| 1...Qd8,Qf8,Qh8,Rxc6,Rf7, | 2.Sd5         |
| either Sxd2,cSe3,Sd6,Sg3  | 2.gRf6        |
| 1...Qg8,Rxd7,Bxc6         | 2.Pg3         |
| 1...fSe3                  |               |

**283\*) G. Doukhan**

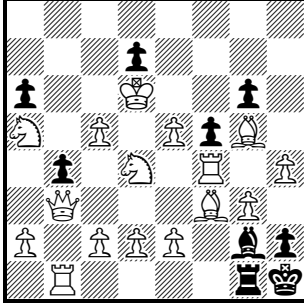
*Europe Échecs*, 1974



#2

- |               |            |
|---------------|------------|
| 1.Bxb4?       | 1...Qxd4!  |
| 1.Bc5?        | 1...bSxd4! |
| 1.Bxe5?       | 1...Rxd4!  |
| 1.Bxe7?       | 1...fSxd4! |
| 1.Bc7?        | 1...Pxd4!  |
| 1.Bb8         | (>2.Bd7)   |
| 1...Qxd4      | 2.Sxb4     |
| 1...bSxd4,Sc5 | 2.R(x)c5   |
| 1...Rxd4      | 2.Sxe5     |
| 1...fSxd4,Sd6 | 2.Sxe7     |
| 1...Pxd4      | 2.Qc7      |

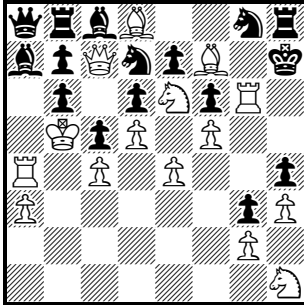
284) J. Fulpius  
*The Problemist*, 1989



#2

- |                |                  |            |           |
|----------------|------------------|------------|-----------|
| 1.aP any?      | 1...PxaP (e.p.)! | 1.Bd5?     | 1...Be4!  |
| 1.aS~?         | 1...Pa5!         | 1.Rxf5?    | 1...Pxf5! |
| 1.bR ~on rank? | 1...RxR!         | 1.Pg4?     | 1...Pgx4! |
| 1.Qd5?         | 1...Rxb1!        | 1.gB any?  | 1...Pg5!  |
| 1.Pc4?         | 1...Pxc4 e.p.!   | 1.Ph5?     | 1...Pxb5! |
| 1.Pc6?         | 1...Pxc6!        |            |           |
| 1.Pd3?         | 1...Bxf3!        | 1.Kxd7     | block     |
| 1.Sb5?         | 1...Pxb5!        |            |           |
| 1.Kd5?         | 1...Pd6!         | 1...Rxb1   | 2.Qxb1    |
| 1.Pe4?         | 1...Pxe4!        | 1...R else | 2.RxR     |
| 1.Pe6?         | 1...Pxe6!        | 1...Bxf3   | 2.Qxf3    |

285) A. Dobrila  
*The Problemist*, 1992



#2

- |             |                   |            |           |
|-------------|-------------------|------------|-----------|
| 1.Rg7+?     | 1...Kh6!          | 1.Pe5?     | 1...Pxe5! |
| 1.Rxa7?     | 1...Qxa7!         | 1.Qxd6?    | 1...Pxd6! |
| 1.Qxc8?     | 1...Rxc8!         | 1.Sg5+?    | 1...Pgx5! |
| 1.Bxg8+?    | 1...Rxc8!         | 1.Sf2?     | 1...Pxf2! |
| 1.Qxd7?     | 1...Bxd7+!        | 1.Sxg3?    | 1...Pgx3! |
| 1.Qxb6?     | 1...Bxb6!         |            |           |
| 1.Bxe7?     | 1...Sxe7!         | 1.Be8      | block     |
| 1.Sf8+?     | 1...Sxf8!         |            |           |
| 1.Ra6, Qc6? | 1...b7P captures! | 1...dS any | 2.S(x)f8  |
| 1.Ra5?      | 1...Pxa5!         | 1...Sh6    | 2.Rg7     |
| 1.Rb4?      | 1...Pxb4!         |            |           |